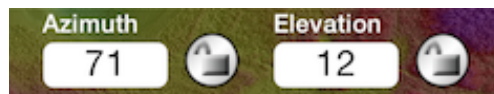
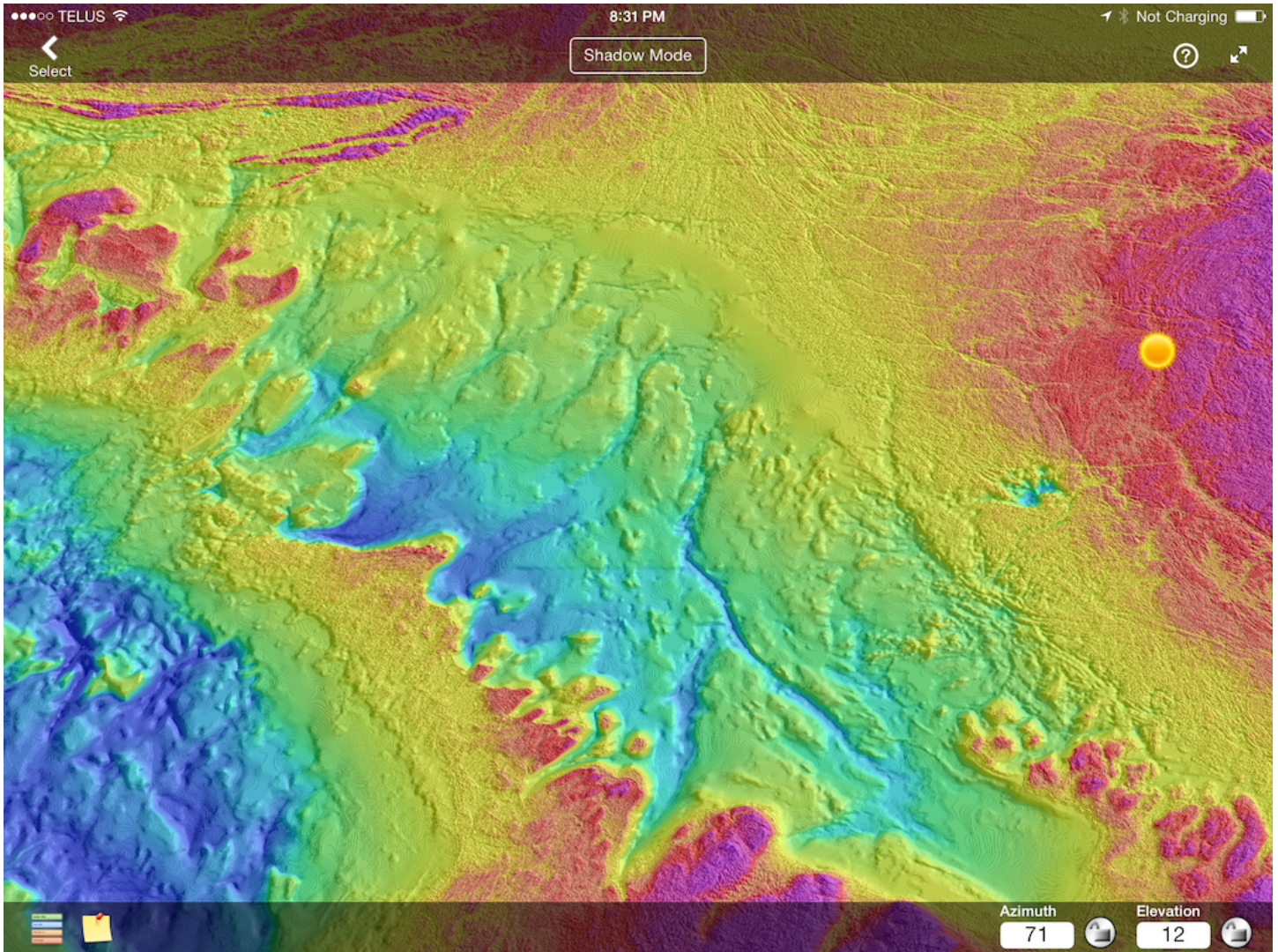


Shadow Mode

When the Shadow context has been selected, you may change the Sun Azimuth and Sun Elevation used in computing 3D interactive shadow by moving the sun cursor around the screen. This enhances the 3D look.



Single tap on numbers to display the keyboard where you can type in your values. You can lock the values by **single tapping** the padlocks next to the values in the menu bar. Once you have locked a value, moving the sun cursor will no longer change the value.